

THE DEEPEST TREAD ON THE MARKET.

Alliance's AGRI STAR II comes with 'Stratified Layer' Technology (SLT), which is a unique lug designed to meet the growing needs of today's tractor owners. The AGRI STAR II provides better performance and roadability even after 40% wear of the tire. Its polyester casing construction provides excellent dimensional stability, and special stubble-guard and wear resistant compounds safeguard the tire from damage to ensure a longer tire life.

80-85 SERIES

SIZE	PR/LI	SIZE	PR/LI	SIZE	PR/LI
280/85R20	112D	420/85R30	140D	380/80R38	152D
320/85R20	119D	460/85R30	145D	420/85R38	144D
250/85R24	109D	320/85R32	126D	460/85R38	149D
280/85R24	115D	320/85R34	133D	460/85R38	167D
320/85R24	122D	380/85R34	137D	520/85R38	155D
320/85R24	142D	420/85R34	147D	520/85R38	169D
340/85R24	125D	420/85R34	142D	650/85R38	173D
380/85R24	131D	460/85R34	147D	480/80R42	156D
420/85R24	137D	460/85R34	157D	480/80R42	169D
280/85R28	118D	320/85R36	128D	520/85R42	157D
320/85R28	124D	340/85R36	132D	520/85R42	169D
340/85R28	127D	320/85R38	143D	430/80R46	159D
380/85R28	133D	340/85R38	133D	480/80R46	158D
420/85R28	139D	340/85R38	151D	520/85R46	158D
380/85R30	135D	380/80R38	142D	480/80R50	159D

70 SERIES

SIZE	PR/LI	SIZE	PR/LI	SIZE	PR/LI
240/70R16	104D	420/65R28	135D	520/70R34	148D
260/70R16	109D	360/70R28	125D	480/70R34	155D
280/70R16	112D	380/70R28	127D	520/70R34	148D
280/70R18	114D	420/70R28	133D	480/70R38	145D
280/70R20	116D	480/70R28	151D	520/70R38	150D
300/70R20	120D	480/70R28	140D	580/70R38	180D
320/70R20	123D	600/70R28	161D	580/70R38	155D
360/70R20	129D	420/70R30	134D	580/70R38	170D
380/70R20	122D	480/70R30	156D	710/70R38	178D
320/70R24	116D	480/70R30	150D	710/70R38	172D
360/70R24	122D	480/70R30	141D	710/70R42	173D
380/70R24	125D	520/70R30	145D	580/70R42	158D
420/70R24	130D	600/70R30	152D		
480/70R24	138D	480/70R34	143D		

90-95 SERIES

SIZE	PR/LI
210/95R16	106D
420/90R30	147D



Yokohama Off-Highway Tires (YOHT) is a division of The Yokohama Rubber Co., specializing in Agriculture, Forestry, Construction, Industrial, Material Handling, Earthmoving, Mining, Port and other commercial tires. YOHT sells its diverse product range, consisting of over 4,000 SKUs, in over 120 countries through its subsidiaries and channel partners. YOHT products are engineered to be application-specific and purpose-built. For more information visit www.yokohama-oht.com or email us at info@yokohama-oht.com.



ALLIANCE AGRI STAR II BEAUTY, BRAINS AND BRAWN



Contact Yokohama Off-Highway Tires America, Inc. at (800) 343-3276 or (339) 900-8080 for your nearest Yokohama OHT Tire Dealer.

[facebook.com/yokohamaohta](https://www.facebook.com/yokohamaohta)
[@yokohamaohta](https://twitter.com/yokohamaohta)
[yohta-blog.yokohama-oht.com](https://www.yokohama-oht.com/blog)
[yokohama-oht.com](http://www.yokohama-oht.com)



STELLAR PERFORMANCE, GUARANTEED.

Agricultural tires just got their most advanced upgrade in a decade. Yokohama Off-Highway Tires is proud to introduce its brand new Alliance AGRI STAR II series, designed to perform better than any tire in its class and to look great while doing it.

The elegant sidewall design of the AGRI STAR II is inspired by water and earth, and complements the modern tractor's connection with the land. The new rugged lug features Stratified Layer Technology and raises the bar of on-field performance, putting the AGRI STAR II in a class by itself.

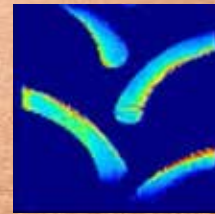
UNIQUE TREAD DESIGN

- The dual step tie-bars prevent lug shuffling and act as mud breakers ensuring excellent self-cleaning
- Overlapping of the central lugs assures a safer and more comfortable ride on the road
- Optimized lug count and deeper tread provide excellent and long-lasting traction
- Wider tread with up to 13% more contact area than similarly sized competitors, ensuring minimum soil compaction

Agri Star II



Equivalent Tires

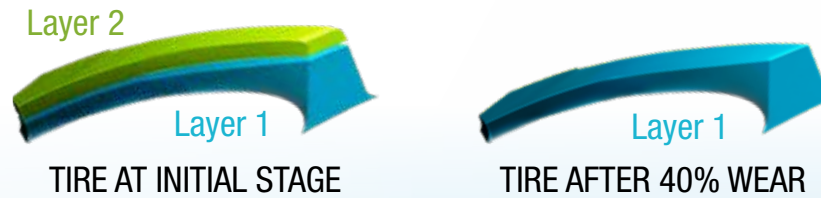


13% INCREASED FOOTPRINT

HOW SLT WORKS



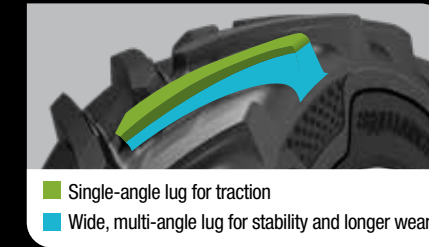
Stratified Layer Technology is a unique combination of two layers - The top layer with a single-angle lug profile and the base layer with a more robust multi-angle profile. Each lug of AGRI STAR II is formed by combining these layers. Even after prolonged wear the second layer of lug ensures traction and roadability, making it well-equipped for on and off-the field operations.



Two different lug profiles result in:

- Increased contact area with the ground and more biting surfaces for superior traction
- Increased volume of rubber in the tire enhances tire stiffness and is more resistant to wear
- Support to the trailing portion of the lug enhances braking during negative slip, for better vehicle stability
- Dual-profile lug maintains traction and roadability even after prolonged wear

UNMATCHED TRACTION AND DURABILITY



- Stubble guard compound
- More biting edges for better grip
- Polyester radial plies for stability
- 13% larger footprint than standard radials
- Center line lugs overlap for great roadability
- Dual step tie-bars stabilize lugs

Ask your tire dealer about the Alliance AGRI STAR II radial, visit www.yokohama-oh.com or call (800) 343-3276.

